



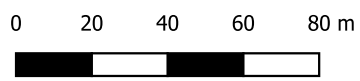
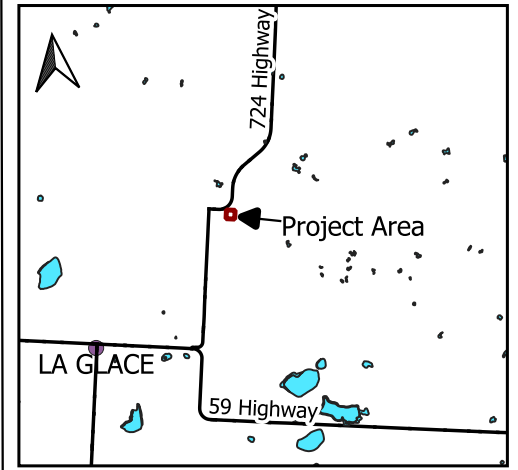




Legend

-  Project LSD
-  Battery Modules
-  Battery Module Transformers
-  Grounding Transformer
-  Station Service Transformer
-  Metering Transformer
-  Control Building
-  Fence
-  Access Road



Municipality: County of Grande Prairie No. 1

Coordinate System: WGS84 UTM Zone 12N
 Scale: 1:2,000
 Prepared by: SABR Energy Consulting Inc.
 Source: AltaLis, OpenStreetMap



Conceptual Project Layout

Saddle Hills Battery Energy Storage System Project

Date: June 2024